

opdrachtgever

Cromvoirts Landgoed B.V.

projectnaam

St. Lambertusstraat, Cromvoirt
Nieuwbouw Greenkeeping Facility

onderdeel

Bijlagen bouwbesluitgegevens

projectnummer 51016194 V01 09-08-2017

projectleider JV

tekenaar AS

bestandsnaam V01 170809 51016194 KRT19 bijlagen.dwg

schaal

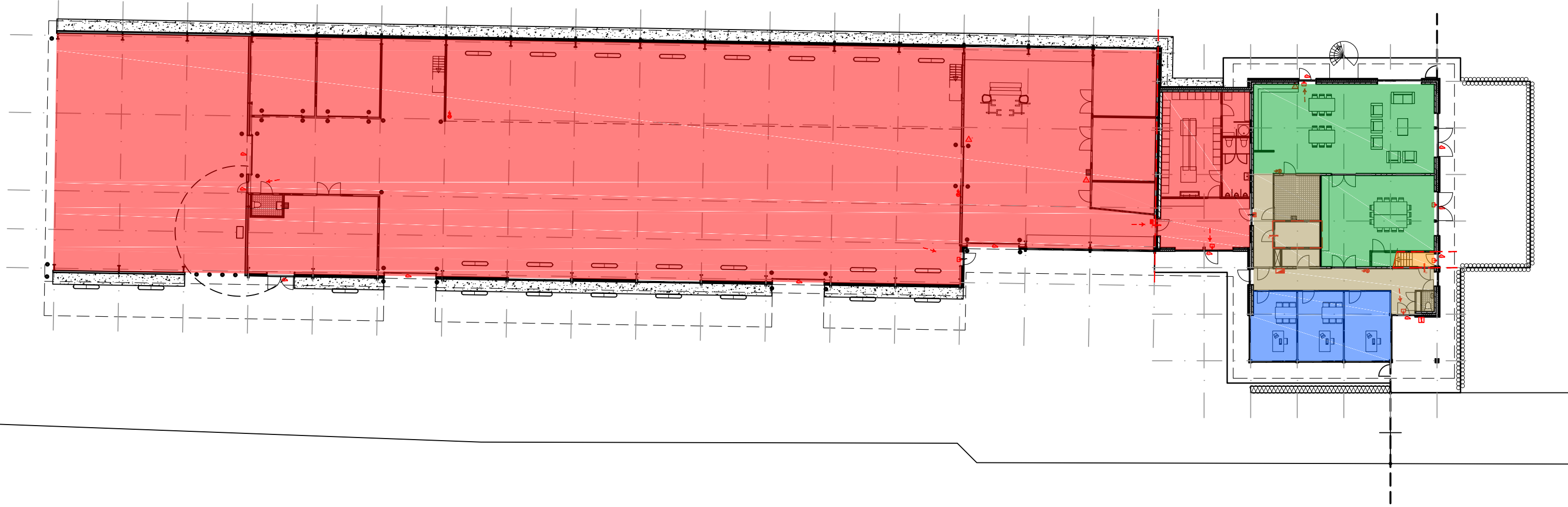
formaat A3

blad 19



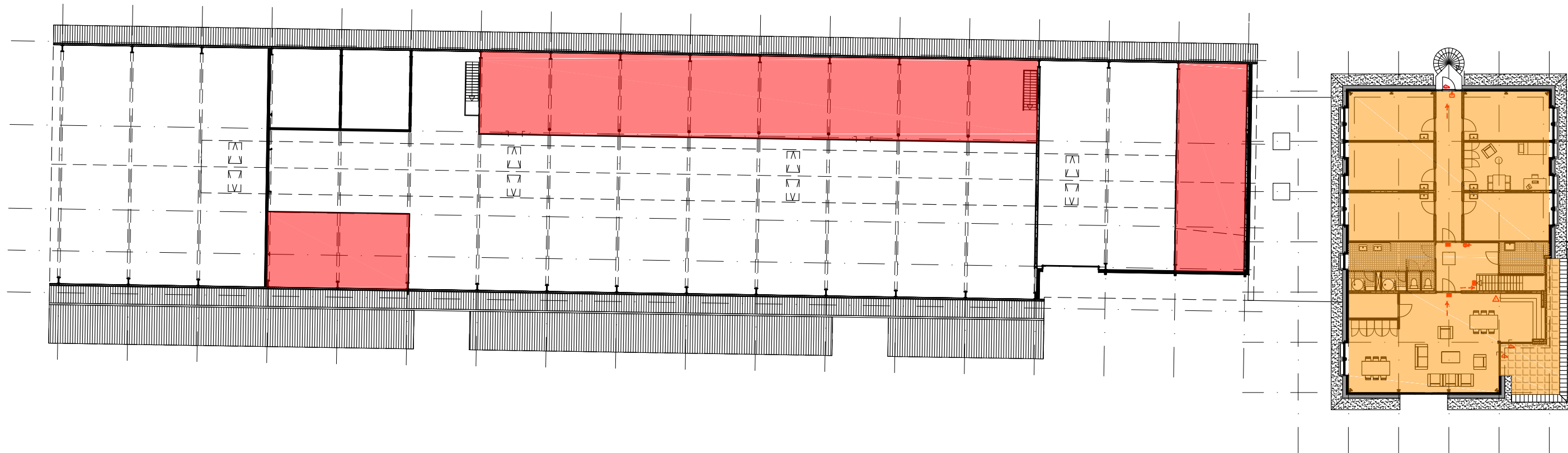
BUREAUVERKUYLEN

DE GRUYTER FABRIEK
VEEMARKTKADE 8
5222 AE 'S-HERTOGENBOSCH
073 623 1313
INFO@BUREAUVERKUYLEN.NL
BUREAUVERKUYLEN.NL



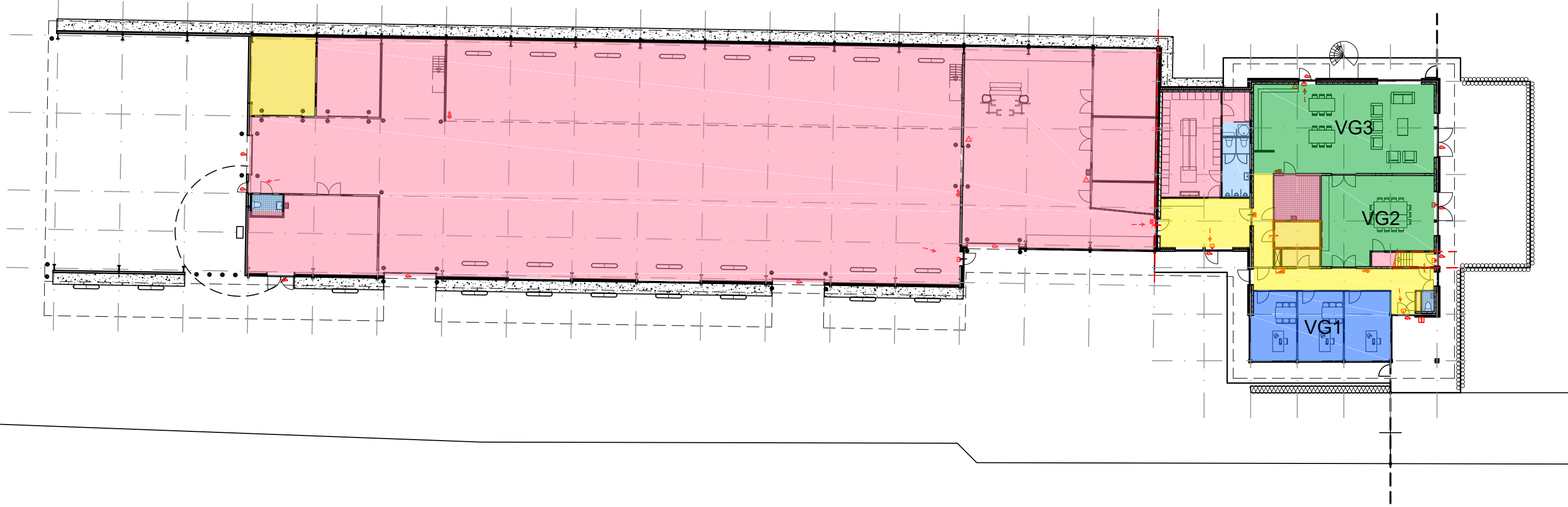
-  gebruiksovervlakte industriefunctie
-  gebruiksovervlakte kantoorfunctie
-  gebruiksovervlakte bijeenkomstfunctie
-  gebruiksovervlakte logiesfunctie
-  gebruiksovervlakte gemeenschappelijk









gebruiksovervlakte
begane grond



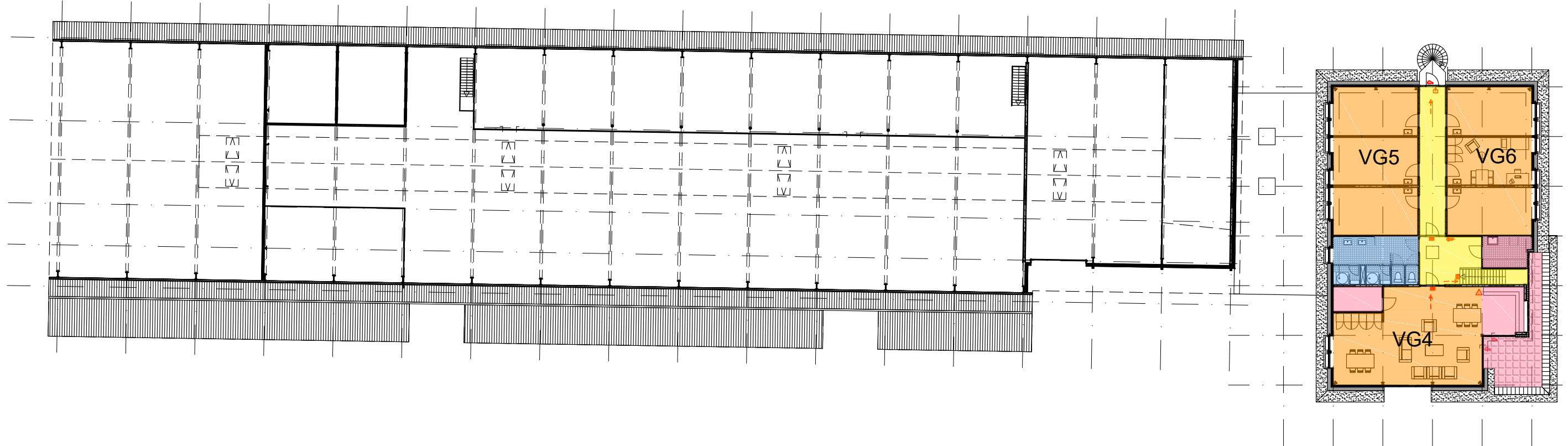
-  gebruiksovervlakte industriefunctie
-  gebruiksovervlakte kantoorfunctie
-  gebruiksovervlakte bijeenkomstfunctie
-  gebruiksovervlakte logiesfunctie
-  gebruiksovervlakte gemeenschappelijk




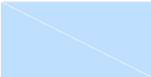




gebruiksovervlakte
verdieping



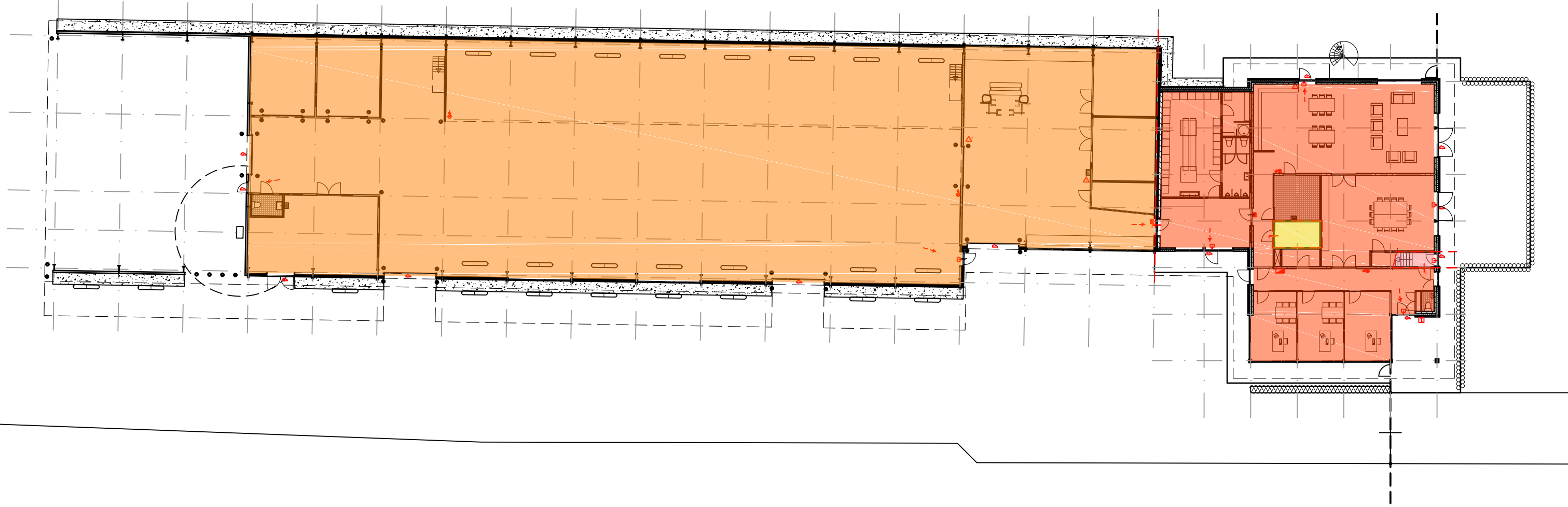
- | | | | |
|-------------------------------------------------------------------------------------|------------------------------------|--------------------------------------------------------------------------------------|--------------------|
|  | verblijfsgebied industriefunctie |  | verkeersruimte |
|  | verblijfsgebied kantoorfunctie |  | toilet ruimten |
|  | verblijfsgebied bijeenkomstfunctie |  | onbenoemde ruimten |
|  | verblijfsgebied logiesfunctie |  | technische ruimten |





verblijfsgebieden
begane grond



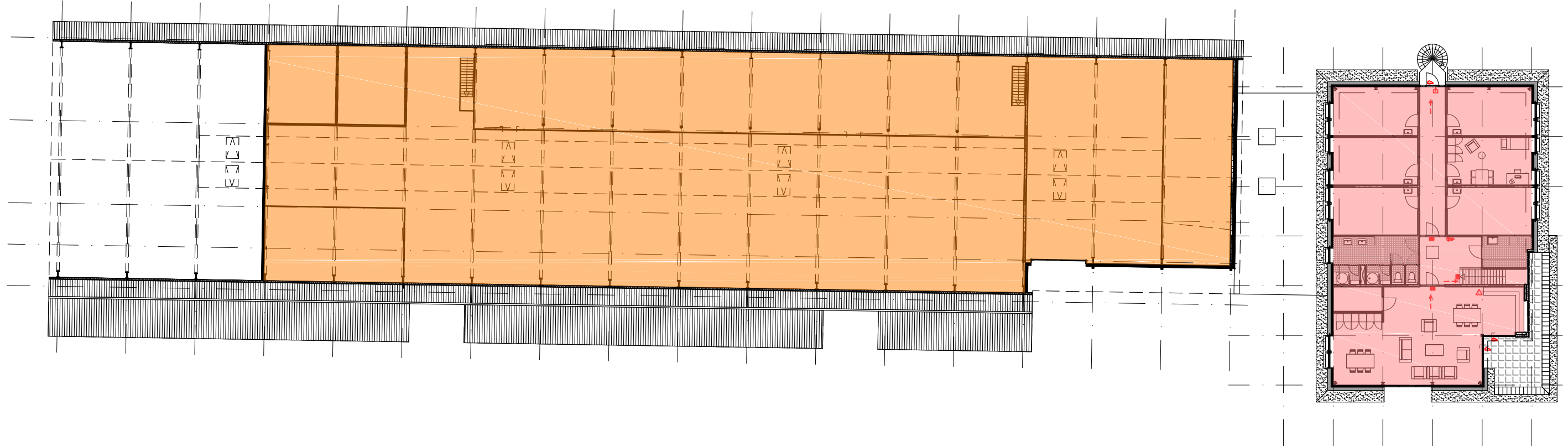
- | | | | |
|-------------------------------------------------------------------------------------|------------------------------------|--------------------------------------------------------------------------------------|--------------------|
|  | verblijfsgebied industriefunctie |  | verkeersruimte |
|  | verblijfsgebied kantoorfunctie |  | toilet ruimten |
|  | verblijfsgebied bijeenkomstfunctie |  | onbenoemde ruimten |
|  | verblijfsgebied logiesfunctie |  | technische ruimten |





verblijfsgebieden
verdieping



-  brandcompartiment BC1 1238,2 m²
-  brandcompartiment BC2 356,9 m²
-  brandcompartiment BC3 7,0 m²
-  brandcompartiment BC4

brandcompartimenten
begane grond



-  brancompartiment BC1 1238,2 m²
-  brancompartiment BC2 356,9 m²
-  brancompartiment BC3 7,0 m²
-  brancompartiment BC4 296,9 m²

brandcompartimenten
verdieping